



ROYAL

UNAPOLOGETIC LUXURY





CONTENTS

OVERVIEW

01

- Welcome from MAG
- Unapologetic Luxury
- Project Overview

LOCATION

02

- JLT – A Gateway to Global Trade
- A Smart District
- Dubai – The Future of Urban Living
- Your Neighborhood

LIFESTYLE

03

- Community Living
- Core Product
- Facilities
- Amenities

THE TOWER

04

- Tower Facilities & Amenities
- Tower Renders
- Floor Plans
- Apartments' Renders

01

OVERVIEW



A WARM WELCOME FROM MAG

Since 1978 MAG has been growing with Dubai, and its race for excellence. The energy of innovation is what drives us forward, as we seek out the best solutions for urban living. At MAG we understand that creating successful developments requires us to project the future needs of our customers and the kind of communities they want to belong to. This is what inspires our work, and this is why at MAG we build more than luxury homes, we develop communities that you will want to belong to. **At the heart of everything we do is the art of living well.**





UNAPOLOGETIC LUXURY

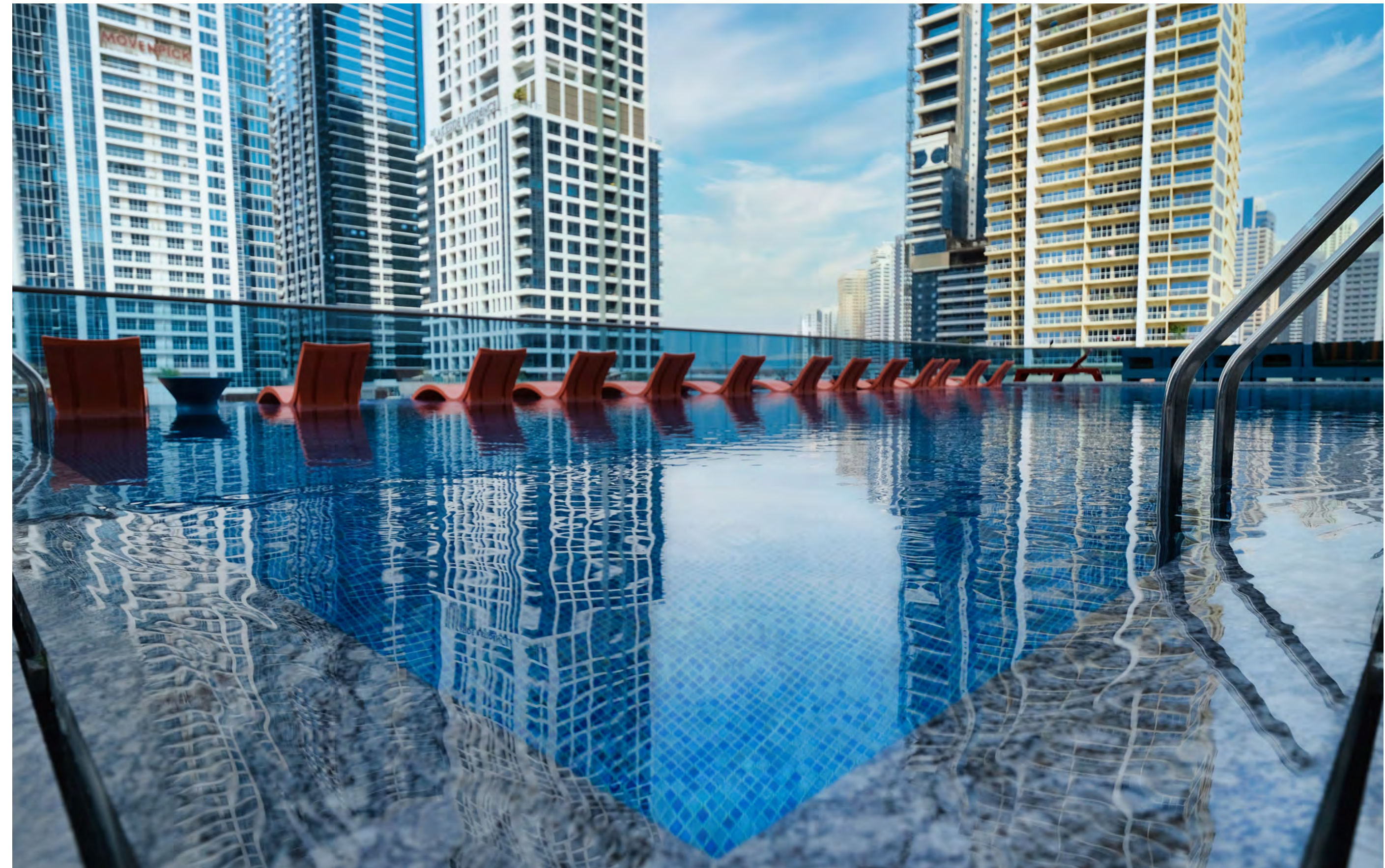
Every project within the MAG portfolio is uniquely crafted with a specific audience in mind. MBL Royal was designed with unapologetic luxury, boasting some of the most refined finishes, materials and furnishings. This residence caters for those distinguished individuals, who possess the confidence to express their bold tastes and never feel the need to explain their lavish lifestyle. Rather they are happy to share their intense and fun loving lifestyle.



M B L R O Y A L I S B O L D

E X T R O V E R T A N D

R O Y A L L Y D E F I A N T



MAG is equally unapologetic when it comes to its high standards and deliverables. Few developers can equal MAG's uncompromising drive to deliver the most luxurious products that will exceed the expectations of its customers



08 | OVERVIEW





PROJECT OVERVIEW

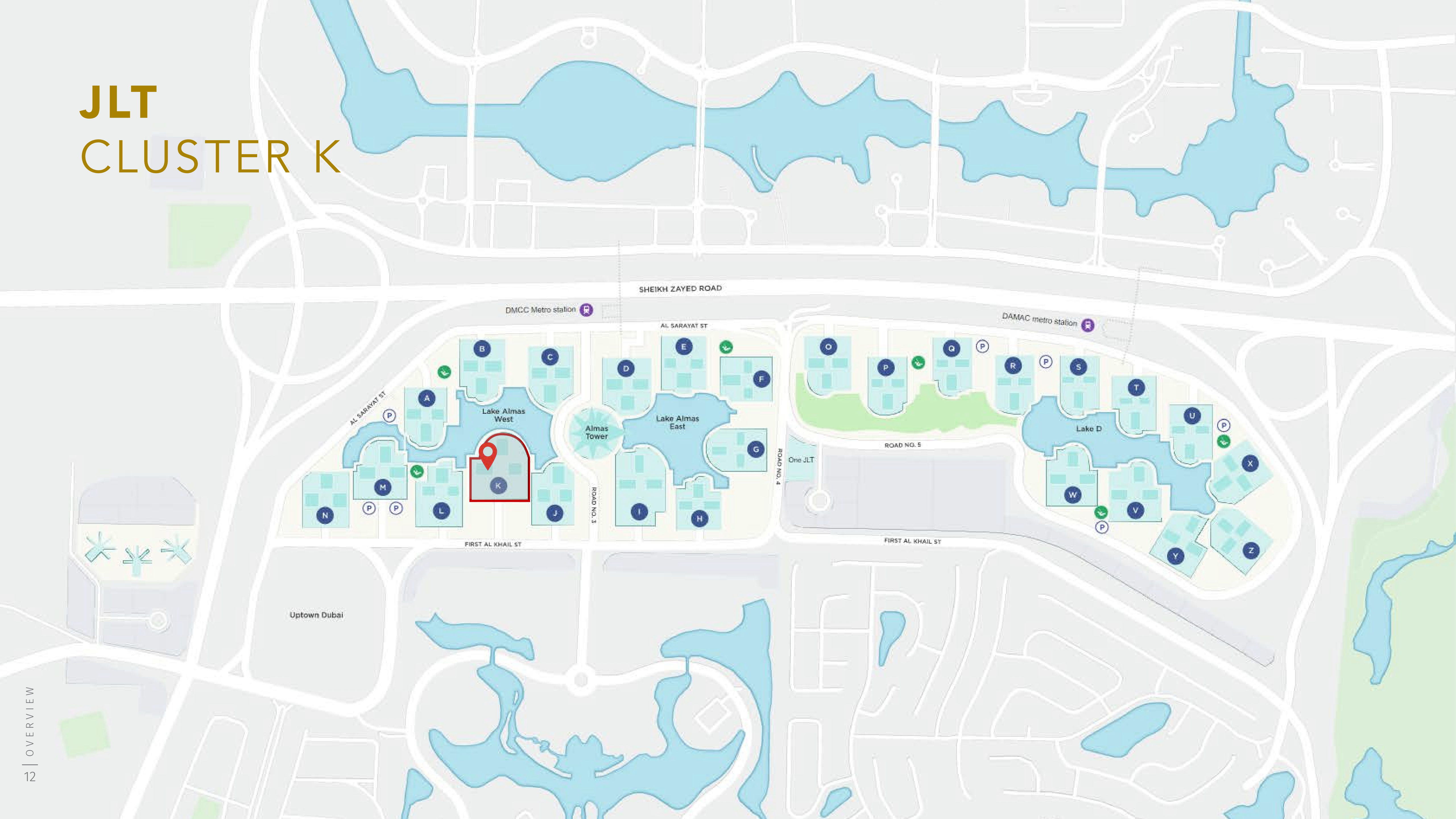
MBL Royal offers its residents waterfront living at its most luxurious. With 330 apartments ranging from penthouses, three and two bedroom apartments to one-bedroom homes with scenic views in one of Dubai's most desirable destinations, and minutes away from Dubai Marina and some of Dubai's best-known beaches. MBL Royal makes its regal appearance in DMCC's most awarded global trading hub, crowned seven times as "Global Free Zone of the Year" by the Financial Times.





Located in cluster K, and in the heart of JLT's vibrant and bustling community, the location offers an abundance of luxury and leisure activities, with a wide range of elegant dining options and cafés. The best cup of coffee is never more than a stroll away. The apartments are fully furnished with the most luxurious accessories and designer furniture, that has been individually sourced, but more than that, the living spaces boast exceptional attention to detail, with interiors that support a lavish lifestyle.

JLT CLUSTER K



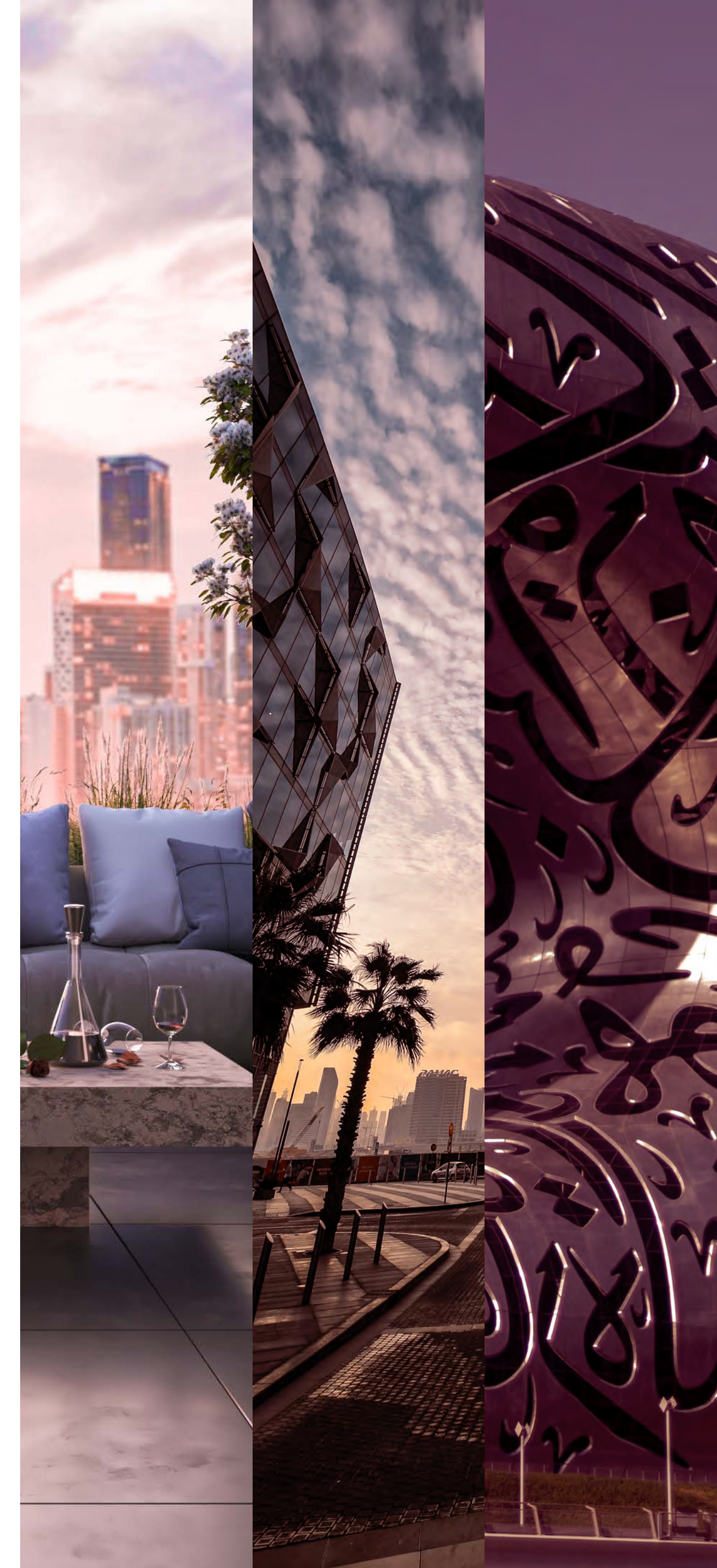
02

LOCATION



DUBAI – THE FUTURE OF URBAN LIVING

Dubai is located in the future, decades ahead of its time; this city literally projects itself as a pioneer for future urban living. Sustainable development forms an integral part of Dubai's Green 2040 Vision. Dubai constantly strives to become one of the world's happiest cities after being ranked 20th in the World Happiness index 2020.





With its iconic statements, strategic vision, architectural magnificence and admirable infrastructure, the positivity reflected in the city is like no other in the world. Dubai will continue to achieve the impossible for its residents and tourists alike.



PRECIOUS STONES



COFFEE



BASE METAL



AGRO



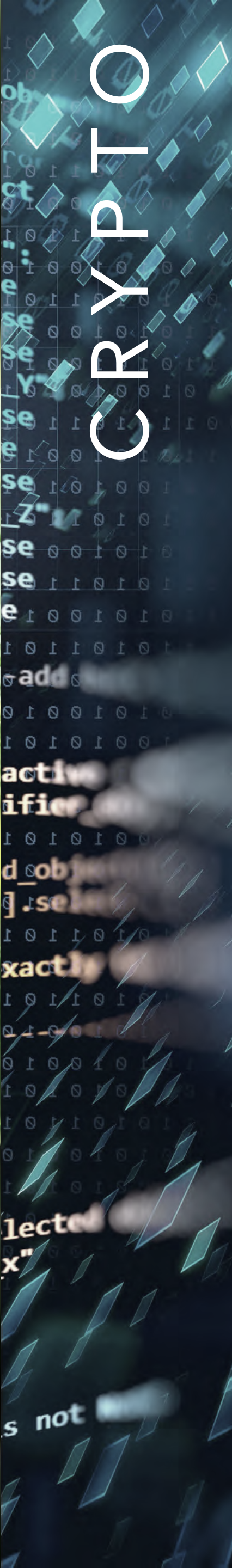
GOLD



CACAO



TEA



CRYPTO

JLT - A GATEWAY TO GLOBAL TRADE

DMCC is the world's most interconnected Free Zone, and the gateway to global trade with its innovative infrastructure and world-class services. It hosts more than 20 000 businesses from all sectors of industry, and is home to a vibrant community of over 100 000 residents, living in a stunning choice of properties.

- Businesses are empowered through the DMCC ecosystems, which include:
- Global trade options and the import and export of a broad range of food products
- The world's third largest diamond trading centre, with safe access to producing and consuming markets
- Business-friendly environments with dedicated co-working spaces, and both online and physical platforms.
- Crypto currency
- Digital innovation and the region's only Google-partnered tech centre



A SMART DISTRICT

DMCC in partnership with Etisalat Digital will roll out smart solutions that will make JLT the first smart and sustainable district of its kind in the region, powered by 5G network.

The initiative aims to enrich the quality of life in JLT, offering seamless and safe daily experiences to residents and visitors. The solutions planned will accelerate the sustainability drive and increase safety, reduce health risks, lower pollution and boost social connectedness





Sustainability & Environmental Benefits

Cost Saving

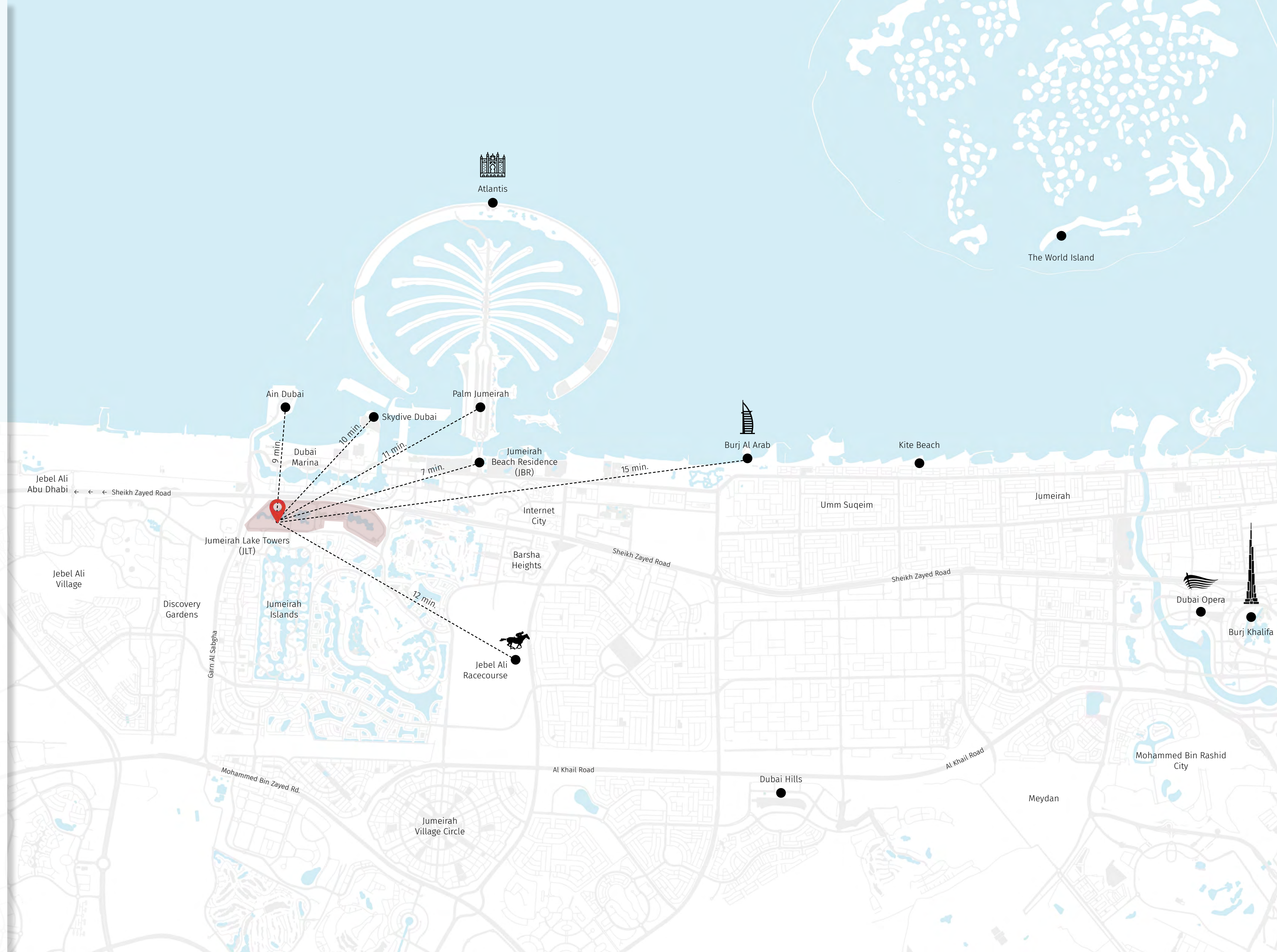
JLT Lifestyle

BURJ 2020

At an estimated 700 meters high, the Burj 2020 is an award winning architectural wonder that will be a new addition to the iconic Dubai skyline. Rising above the JLT skyline, the 580-meter observation deck will give viewers a superb panorama of Burj Khalifa, Dubai Marina and Dubai Eye.

YOUR NEIGHBORHOOD

- Dubai Marina (6 min.)
- Ain Dubai (9 min.)
- Skydive Dubai (10 min.)
- Palm Jumeirah (11 min.)
- JBR (7 min.)
- Jumeirah Islands (7 min.)
- Internet City (8 min.)
- Jebel Ali Racecourse (12 min.)
- Burj Al-Arab (15 min.)
- Jebel Ali (19 min.)
- Abu Dhabi (45 min.)



03

LIFESTYLE



COMMUNITY LIVING

One of the biggest advantages of living and working in the Jumeirah Lakes Towers community is its ideal location and the wealth of indoor and outdoor activities. From leisure and recreation, retail, hospitality, dining and outdoor sports options, everything is within close proximity. Minutes away from the airport, the Dubai Marina, shopping malls, public and private beaches and two metro stations, you will find all you need in JLT.

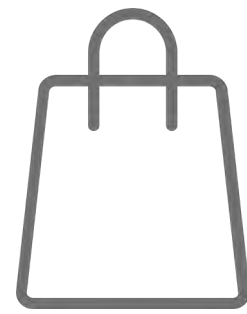


FACILITIES



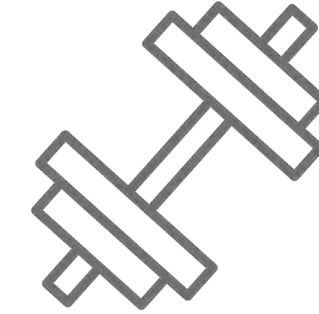
460

Cafes & Restaurants



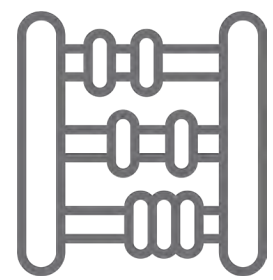
297

Retail Shops
& Convenience Stores



324

Fitness & Beauty



179

Education & Childcare



80

Commercial
& Residential Towers

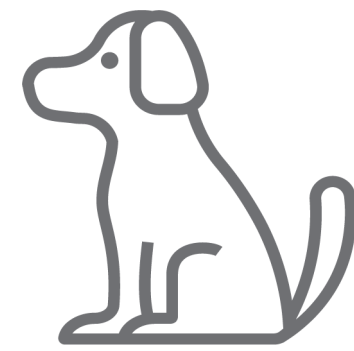


5

Hotels

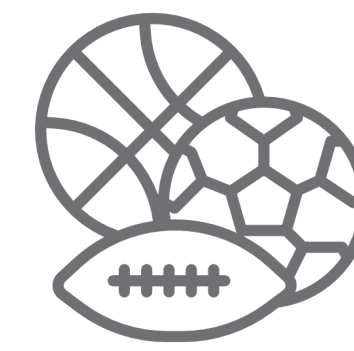


AMENITIES



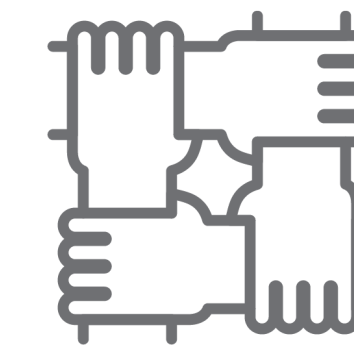
DOG PARK

- Gated off-leash area
- Wide open green spaces
- Safe setting to run, train & play
- Shaded area to relax



SPORTS HUB

- Corporate Football Tournament
- Community Fitness Club
- Junior Legends Football League
- Basket Ball Courts

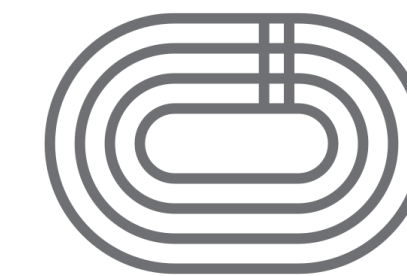


COMMUNITY EVENTS

- Cinema under the stars
- Halloween Fest
- Dubai Fitness Challenge
- JLT Festive Market



MEDICAL CENTERS



RUNNING TRACKS



EVERYDAY CONNECTIONS

Education

- Knowledge Village
- The Kent College Dubai
- Emirates Int. School
- Dubai British School
- Regent Int.School

Commercial

- DMCC Freezone
- Dubai Internet City
- Dubai TECOM
- Dubai Media City

Leisure

- Aquaventure Waterpark
- IMG Worlds of Adventure
- Dubai Miracle Garden
- Skydive Dubai

Hospitality

- Mövenpick Hotel JLT
- FIVE Palm Jumeirah Hotel
- Kempinski Hotel MOE

Healthcare

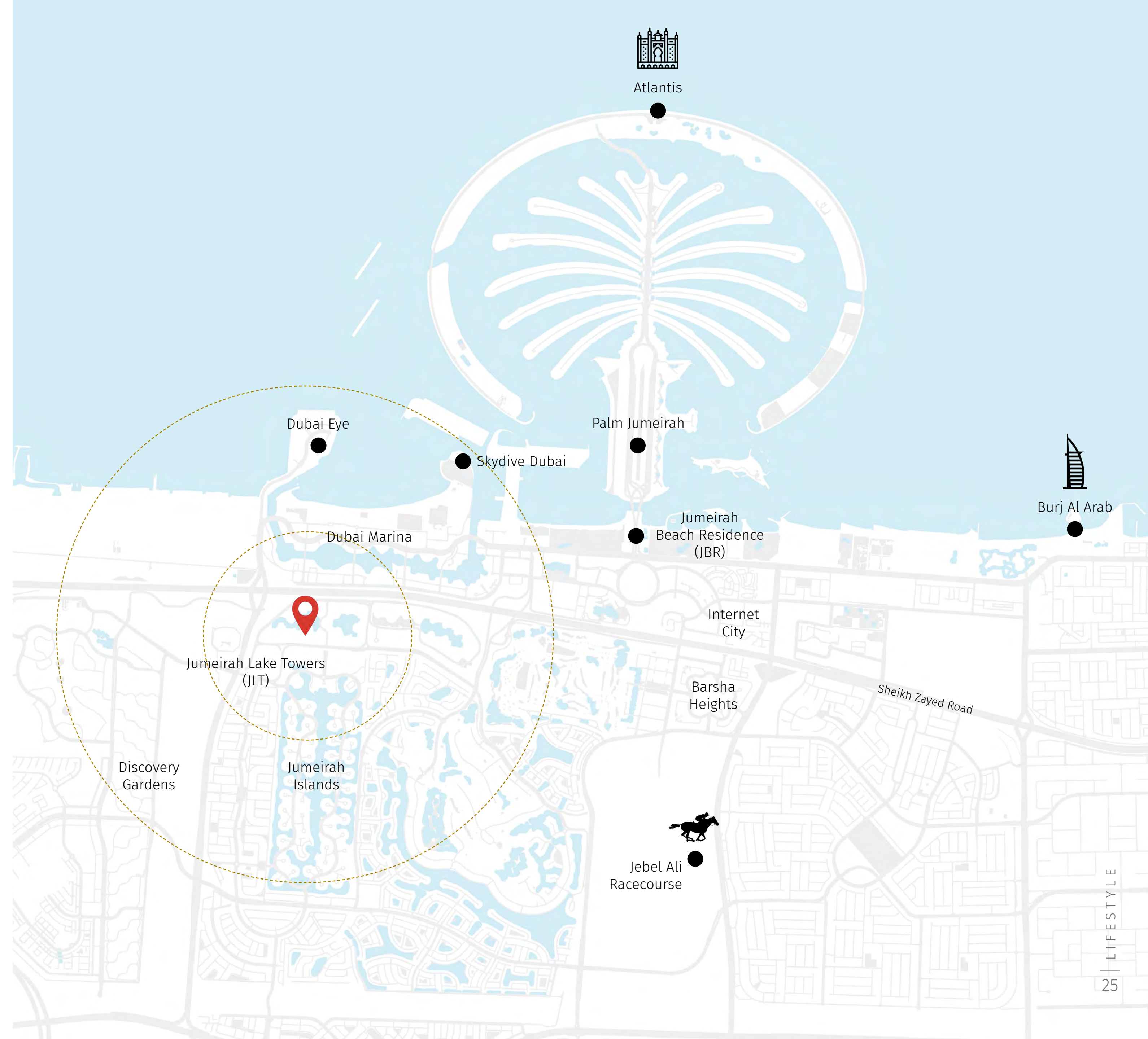
- Medcare Medical Centre
- Saudi-German Hospital
- Al-Zahra Hospital, Dubai
- Emirates Hospital Clinics
- Mediclinic Parkview Hopital

Retail

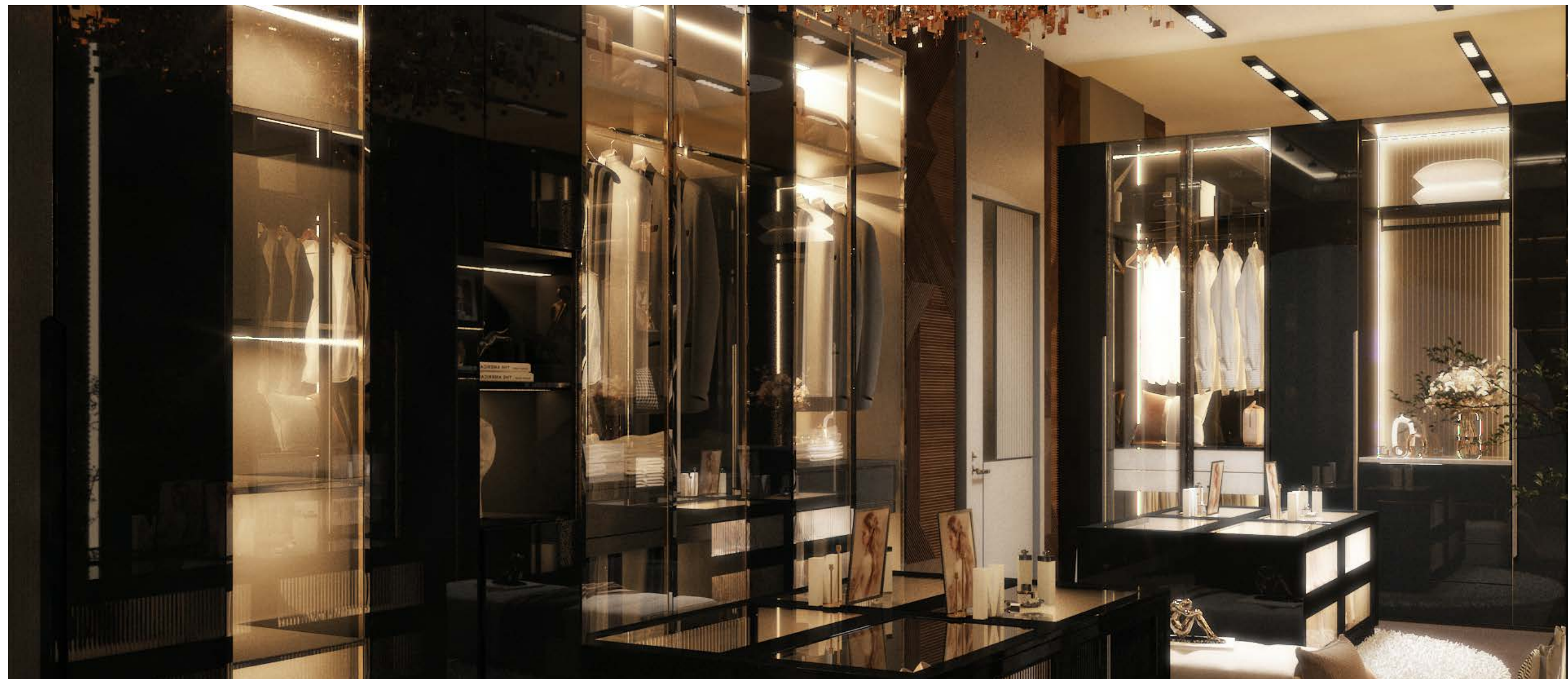
- Mall of The Emirates
- Dubai Marina Mall
- Souk Madinat Jumeirah
- Ibn Battuta Mall

Golf Courses

- Arabian Ranches Golf Club
- Polo Club
- The ELS Club
- Emirates Golf Club



THE TOWER 04



FACILITIES AND AMENITIES

The 330 exclusively furnished residential units, are intended for the modern professional, whose affluent taste and bold lifestyle can match the dynamic spirit of JLT's community life and business hub. Throughout the project the emphasis is on the richness of design and textures, from lavish fabric wall paneling, designer ceramic tiles to rich suede leather.

196

ONE BEDROOM

64

TWO BEDROOM

68

THREE BEDROOM

2

PENTHOUSES



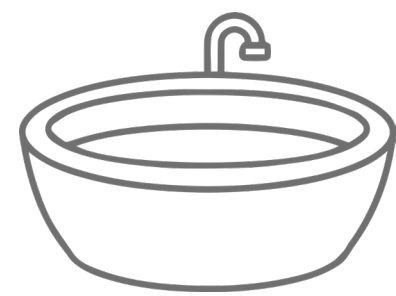
SWIMMING
POOL



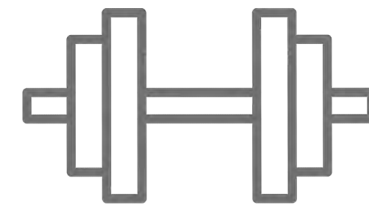
KIDS
PLAY AREA



BBQ AREA



JACUZZI



HEALTH CLUB
& GYM





The luxurious features of MBL Royal put it in a league of its own with a fully equipped state of the art gym including sauna and steam room, or relax and unwind in the Jacuzzi after your workout. The recreational areas are intended to bring the community together, whether you are enjoying the quiet adult swimming pool, BBQ area, or children's play area and family swimming pool, the spaces have been designed for your individual pleasure. With 24-hour security, world-class safety features, and a concierge at your disposal, you can enjoy the luxury of feeling truly cared for.



MBI
ROYAL



RECEPTION & LOBBY

All room sizes and floorplan measurements are approximate and may vary per unit. Floorplans and unit features are preliminary and proposed only. Developer reserves the right to modify, revise, change or withdraw any or all of same in its sole and absolute discretion and without prior notice. Depictions of furnishings, finishes, appliances, counters, soffits, floor coverings and other matters of detail, including, without limitation, items of finish and decoration are conceptual only and are not necessarily included in each Unit. Consult your Agreement and the Prospectus for items included with your Unit.

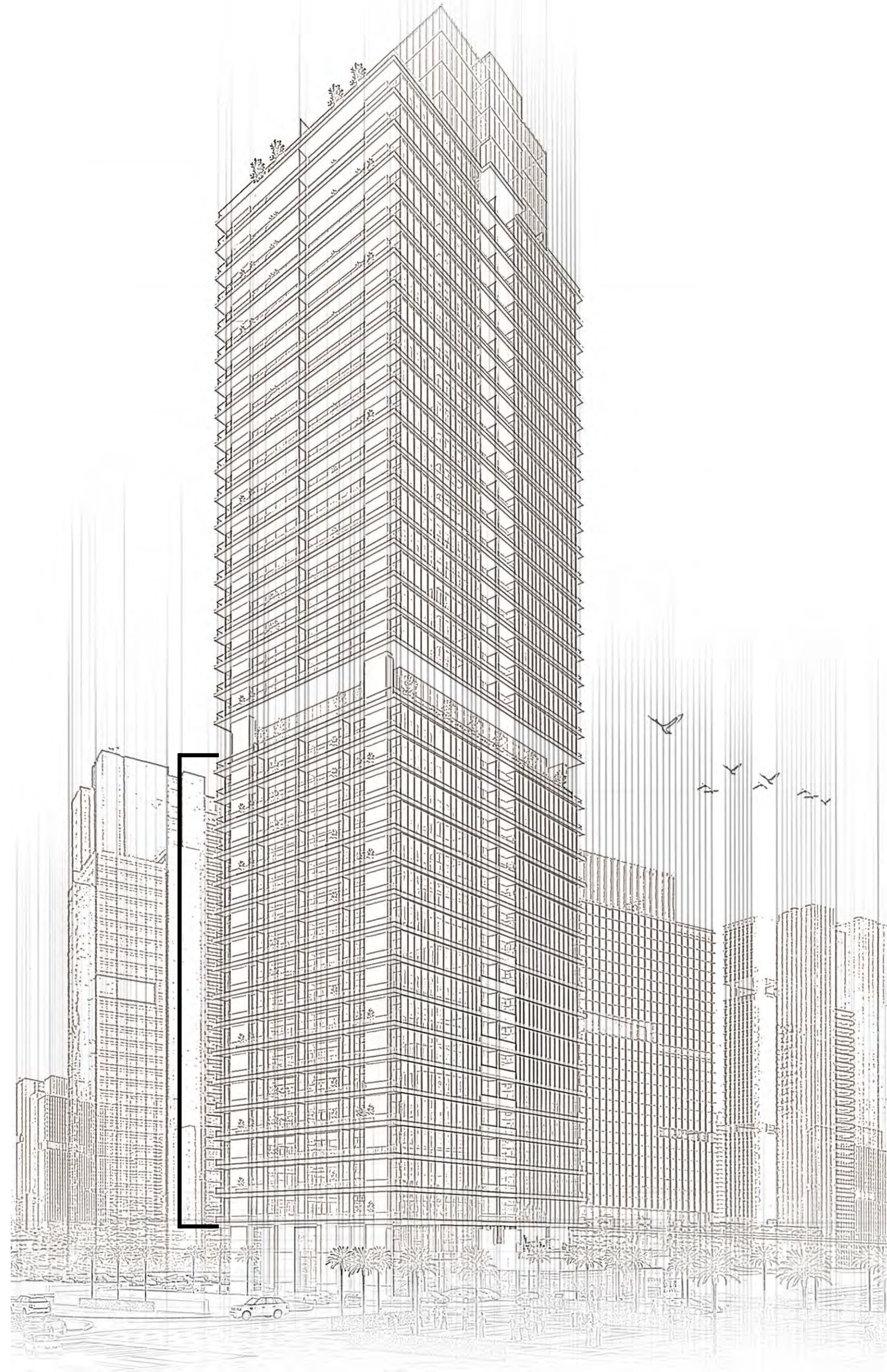


ELEVATORS

All room sizes and floorplan measurements are approximate and may vary per unit. Floorplans and unit features are preliminary and proposed only. Developer reserves the right to modify, revise, change or withdraw any or all of same in its sole and absolute discretion and without prior notice. Depictions of furnishings, finishes, appliances, counters, soffits, floor coverings and other matters of detail, including, without limitation, items of finish and decoration are conceptual only and are not necessarily included in each Unit. Consult your Agreement and the Prospectus for items included with your Unit.

FLOOR PLANS

2nd TO 17th FLOOR

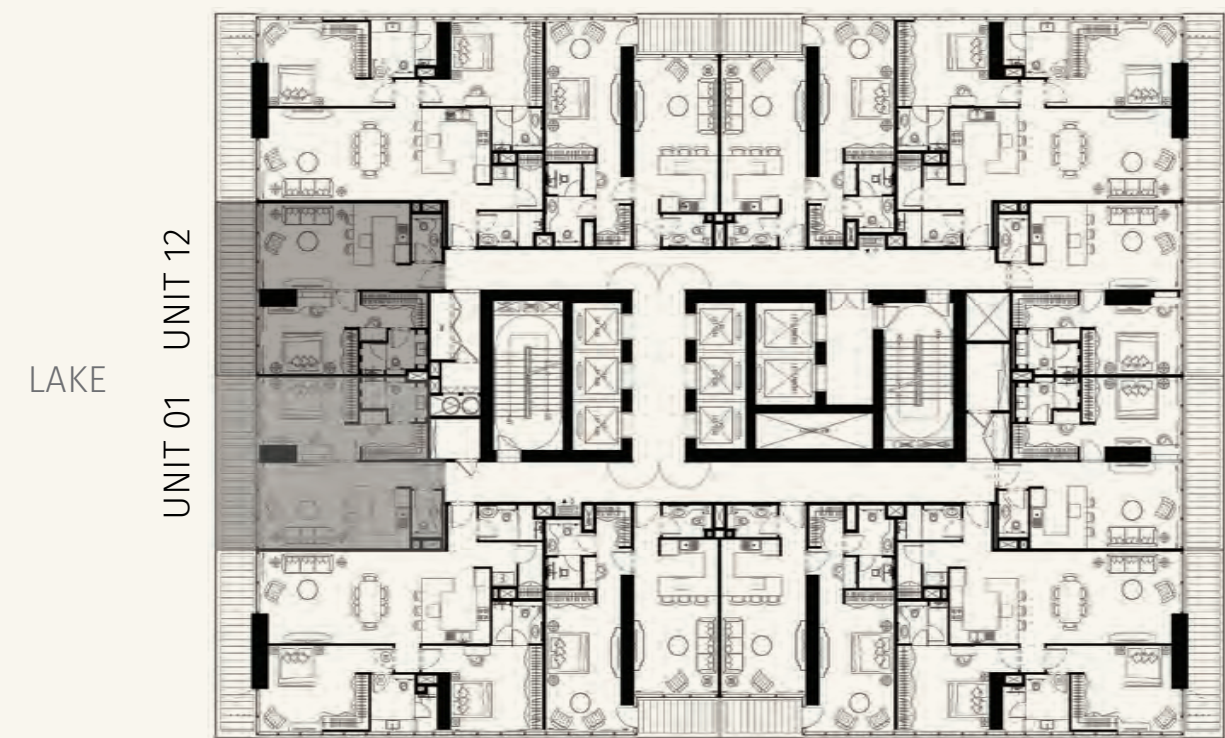
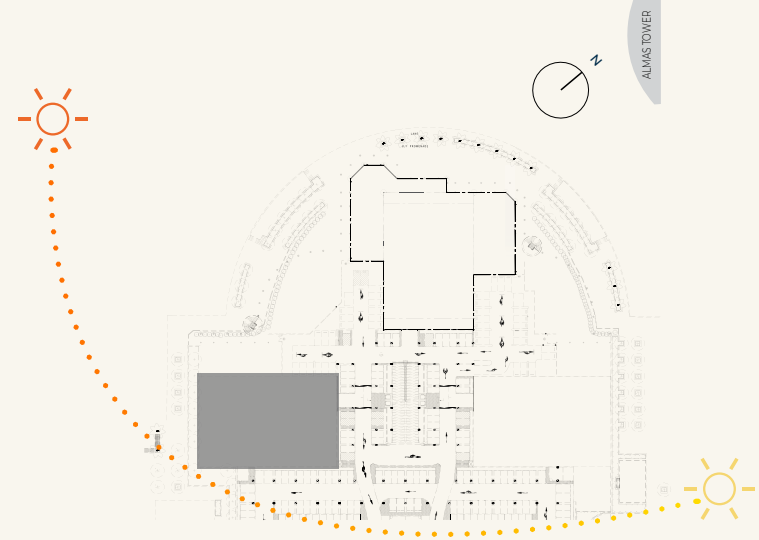


LAKE VIEW

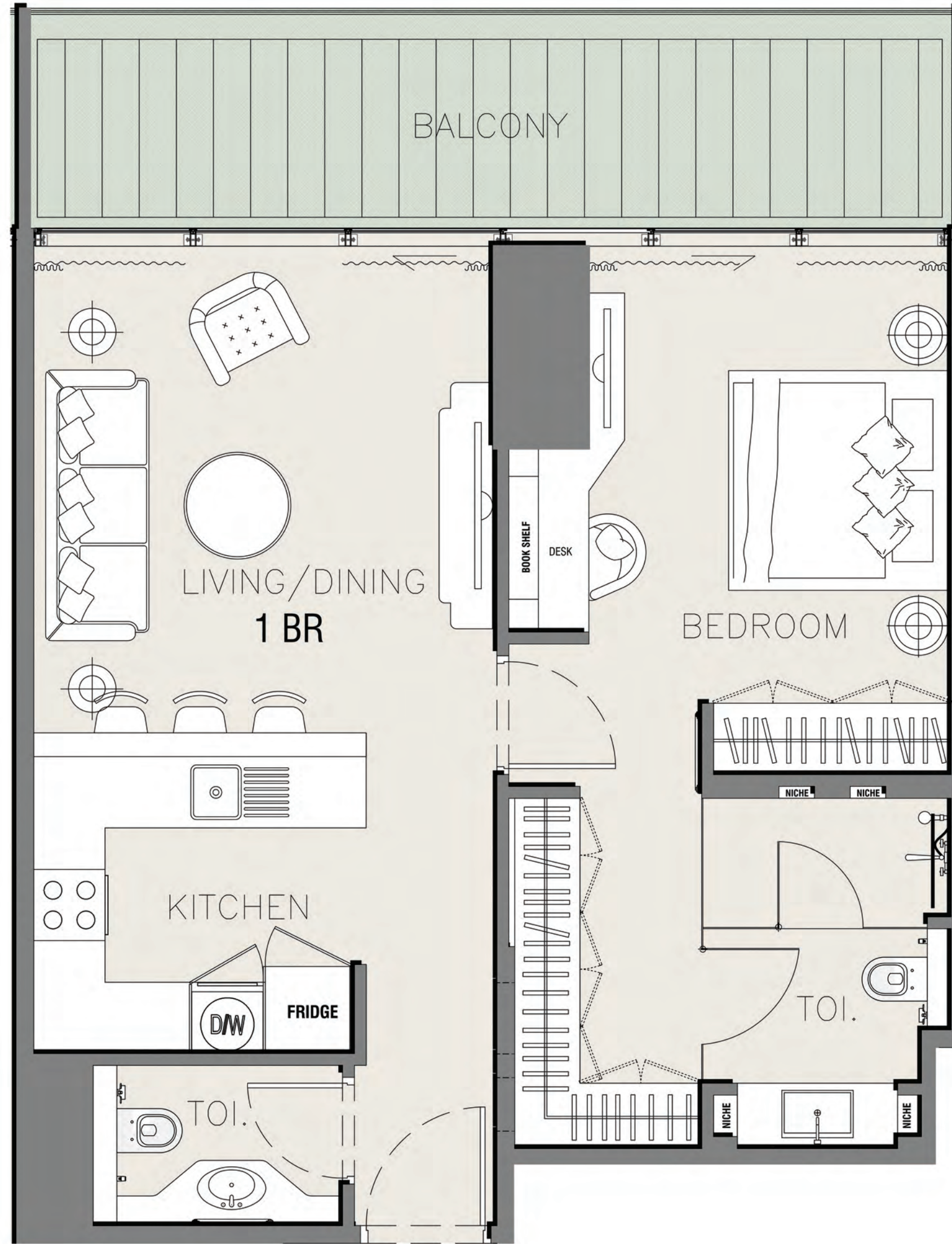


2ND TO 17TH FLOOR

ONE BEDROOM



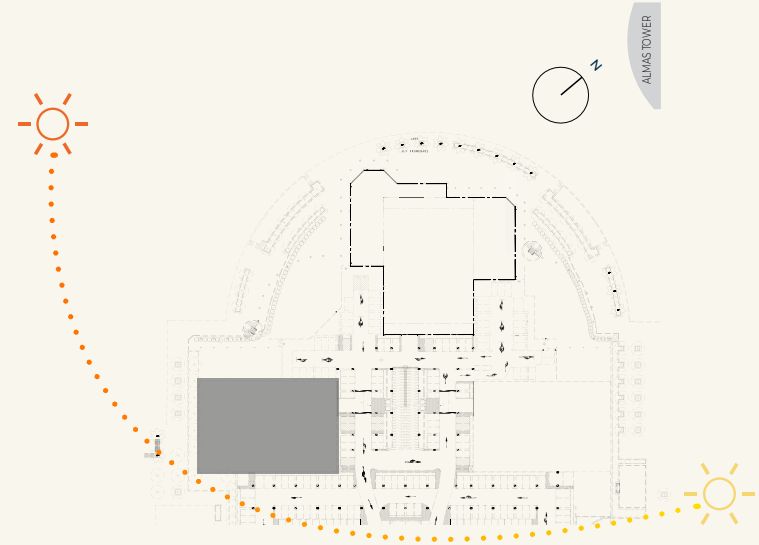
UNIT AREA	695.53 SQ.FT.
BALCONY AREA	152.65 SQ.FT.
NET UNIT AREA	848.18 SQ.FT.
TYPE	A
UNITS	1 AND 12



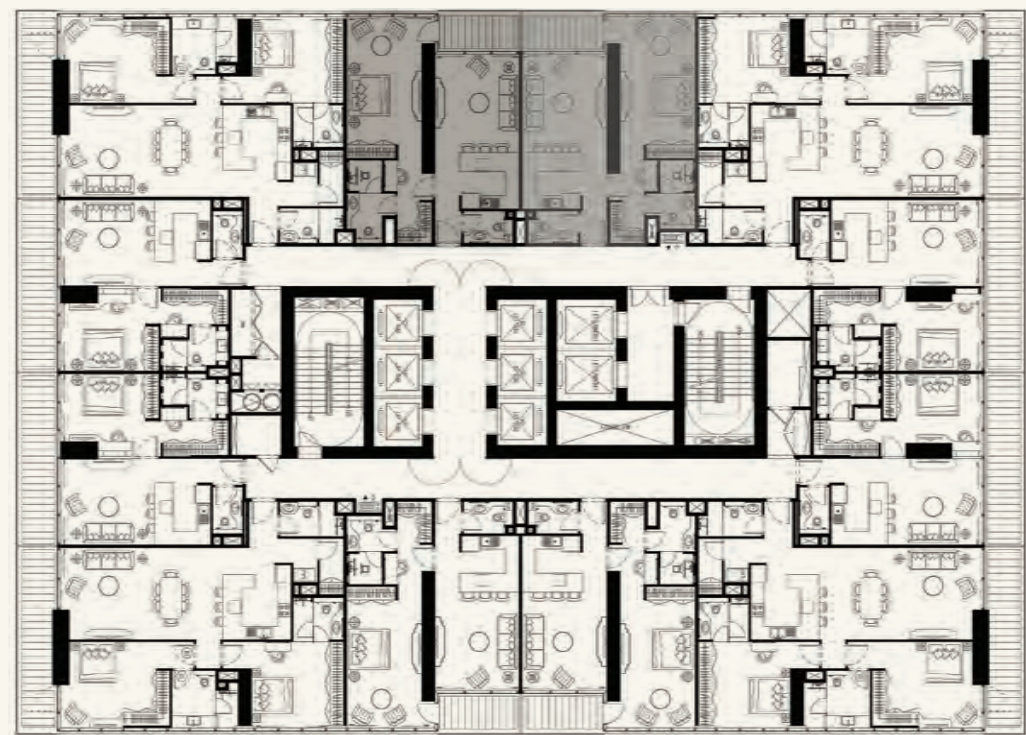
All room sizes and floorplan measurements are approximate and may vary per unit. Floorplans and unit features are preliminary and proposed only. Developer reserves the right to modify, revise, change or withdraw any or all of same in its sole and absolute discretion and without prior notice. Depictions of furnishings, finishes, appliances, counters, soffits, floor coverings and other matters of detail, including, without limitation, items of finish and decoration are conceptual only and are not necessarily included in each Unit. Consult your Agreement and the Prospectus for items included with your Unit.

2ND TO 17TH FLOOR

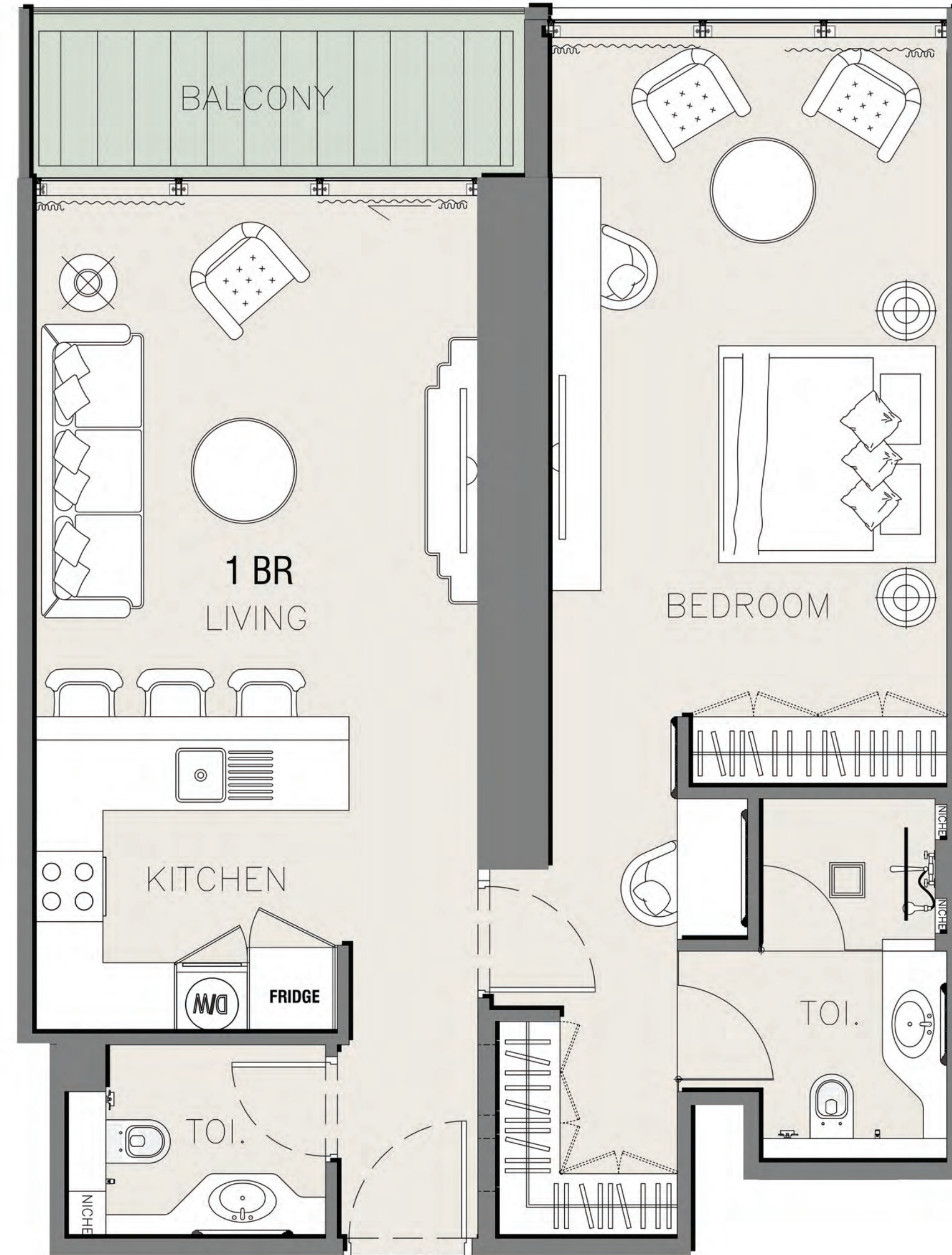
ONE BEDROOM



LAKE
UNIT 10 UNIT 09



UNIT AREA	838.50 SQ.FT.
BALCONY AREA	72.03 SQ.FT.
NET UNIT AREA	910.53 SQ.FT.
TYPE	B
UNITS	9 AND 10



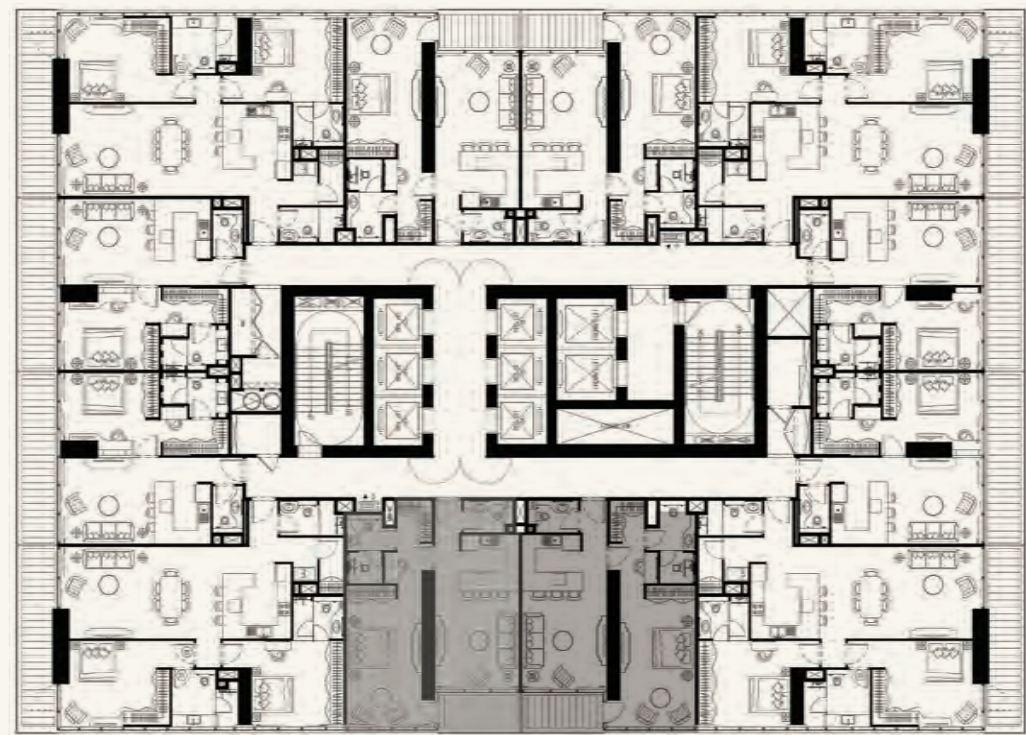
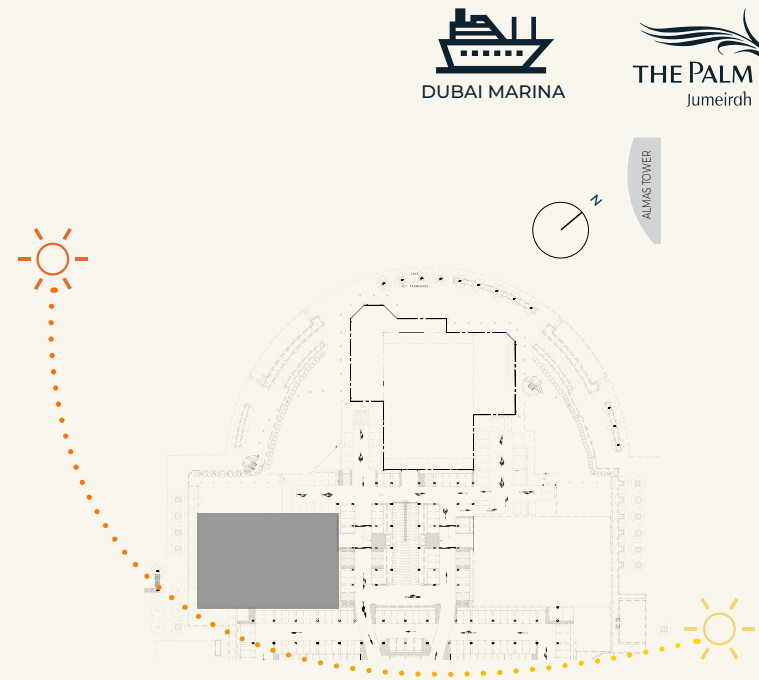
All room sizes and floorplan measurements are approximate and may vary per unit. Floorplans and unit features are preliminary and proposed only. Developer reserves the right to modify, revise, change or withdraw any or all of same in its sole and absolute discretion and without prior notice. Depictions of furnishings, finishes, appliances, counters, soffits, floor coverings and other matters of detail, including, without limitation, items of finish and decoration are conceptual only and are not necessarily included in each Unit. Consult your Agreement and the Prospectus for items included with your Unit.

JUMERIAH ISLANDS VIEW



2ND TO 17TH FLOOR

ONE BEDROOM



UNIT 03 UNIT 04
JUMEIRAH ISLANDS

UNIT AREA	838.50 SQ.FT.
BALCONY AREA	72.03 SQ.FT.
NET UNIT AREA	910.53 SQ.FT.
TYPE	B
UNITS	3 AND 4



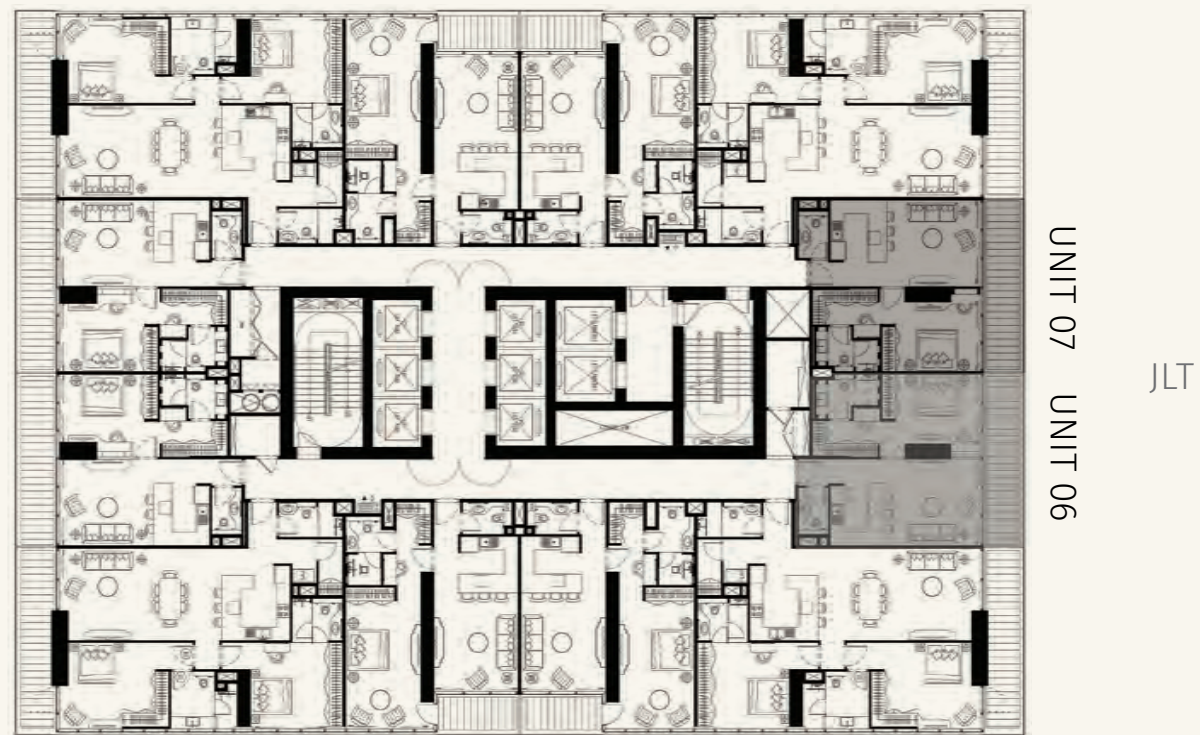
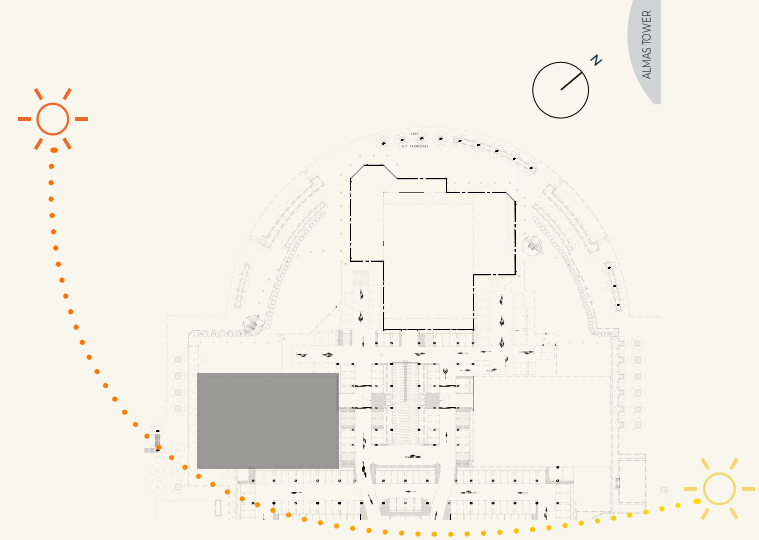
All room sizes and floorplan measurements are approximate and may vary per unit. Floorplans and unit features are preliminary and proposed only. Developer reserves the right to modify, revise, change or withdraw any or all of same in its sole and absolute discretion and without prior notice. Depictions of furnishings, finishes, appliances, counters, soffits, floor coverings and other matters of detail, including, without limitation, items of finish and decoration are conceptual only and are not necessarily included in each Unit. Consult your Agreement and the Prospectus for items included with your Unit.

JLT VIEW

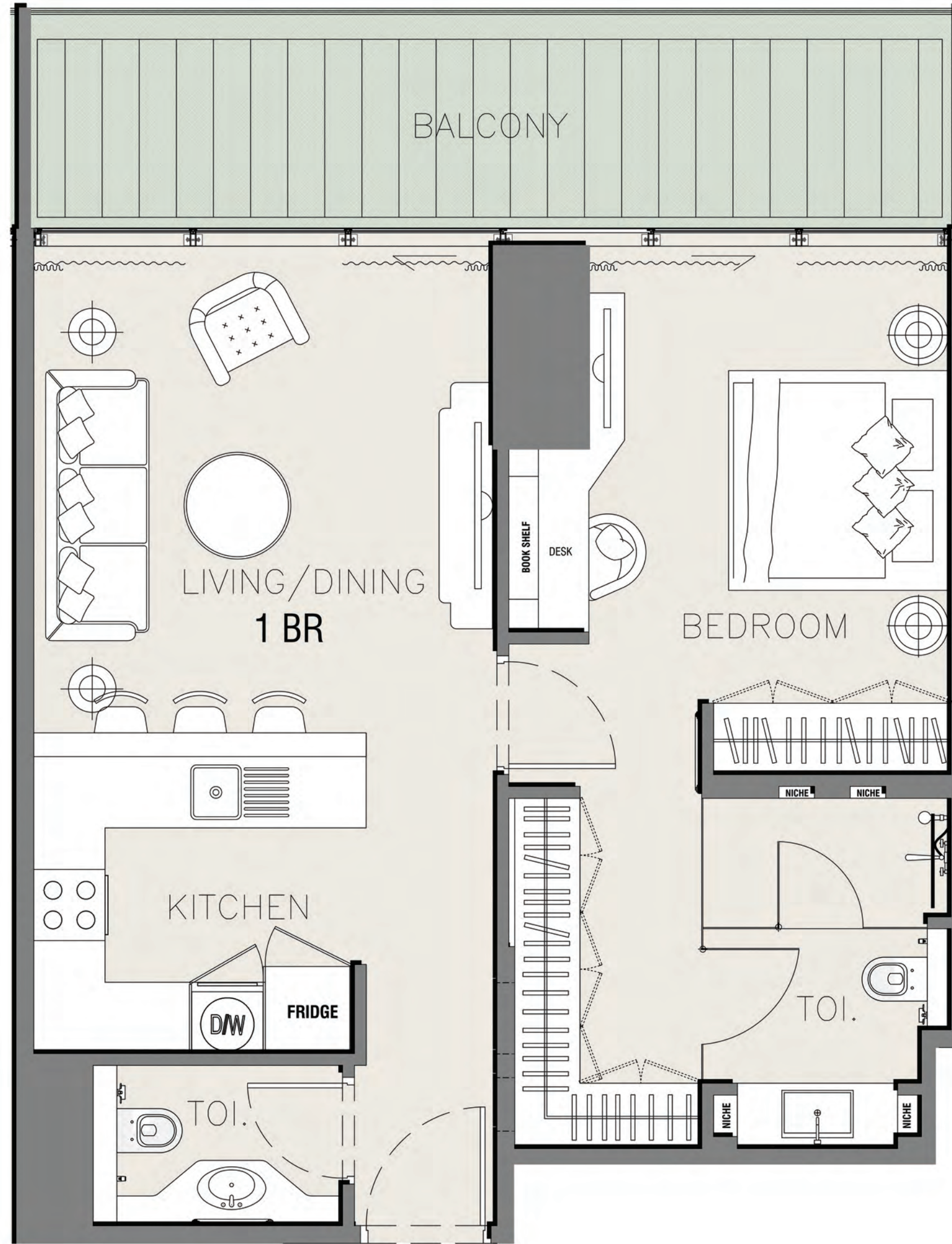


2ND TO 17TH FLOOR

ONE BEDROOM



UNIT AREA	695.53 SQ.FT.
BALCONY AREA	152.65 SQ.FT.
NET UNIT AREA	848.18 SQ.FT.
TYPE	A
UNITS	6 AND 7



All room sizes and floorplan measurements are approximate and may vary per unit. Floorplans and unit features are preliminary and proposed only. Developer reserves the right to modify, revise, change or withdraw any or all of same in its sole and absolute discretion and without prior notice. Depictions of furnishings, finishes, appliances, counters, soffits, floor coverings and other matters of detail, including, without limitation, items of finish and decoration are conceptual only and are not necessarily included in each Unit. Consult your Agreement and the Prospectus for items included with your Unit.

All room sizes and floorplan measurements are approximate and may vary per unit. Floorplans and unit features are preliminary and proposed only. Developer reserves the right to modify, revise, change or withdraw any or all of same in its sole and absolute discretion and without prior notice. Depictions of furnishings, finishes, appliances, counters, soffits, floor coverings and other matters of detail, including, without limitation, items of finish and decoration are conceptual only and are not necessarily included in each Unit. Consult your Agreement and the Prospectus for items included with your Unit.

LIVING ROOM



KITCHEN

All room sizes and floorplan measurements are approximate and may vary per unit. Floorplans and unit features are preliminary and proposed only. Developer reserves the right to modify, revise, change or withdraw any or all of same in its sole and absolute discretion and without prior notice. Depictions of furnishings, finishes, appliances, counters, soffits, floor coverings and other matters of detail, including, without limitation, items of finish and decoration are conceptual only and are not necessarily included in each Unit. Consult your Agreement and the Prospectus for items included with your Unit.



LIVING ROOM



All room sizes and floorplan measurements are approximate and may vary per unit. Floorplans and unit features are preliminary and proposed only. Developer reserves the right to modify, revise, change or withdraw any or all of same in its sole and absolute discretion and without prior notice. Depictions of furnishings, finishes, appliances, counters, soffits, floor coverings and other matters of detail, including, without limitation, items of finish and decoration are conceptual only and are not necessarily included in each Unit. Consult your Agreement and the Prospectus for items included with your Unit.



BEDROOM



All room sizes and floorplan measurements are approximate and may vary per unit. Floorplans and unit features are preliminary and proposed only. Developer reserves the right to modify, revise, change or withdraw any or all of same in its sole and absolute discretion and without prior notice. Depictions of furnishings, finishes, appliances, counters, soffits, floor coverings and other matters of detail, including, without limitation, items of finish and decoration are conceptual only and are not necessarily included in each Unit. Consult your Agreement and the Prospectus for items included with your Unit.



CLOSET



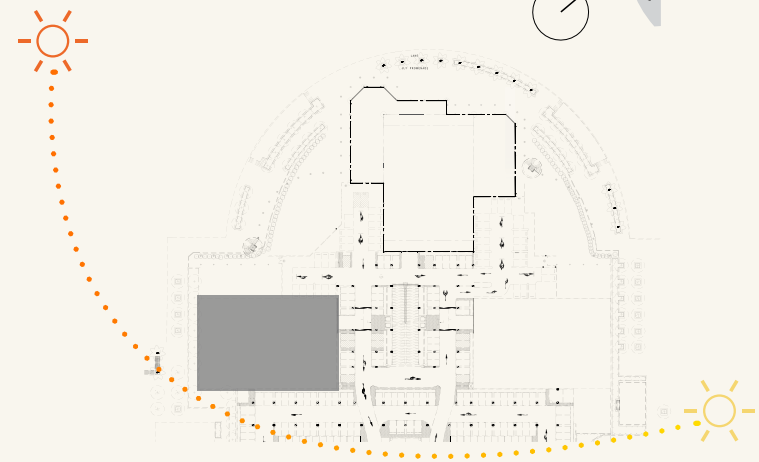
BATHROOM



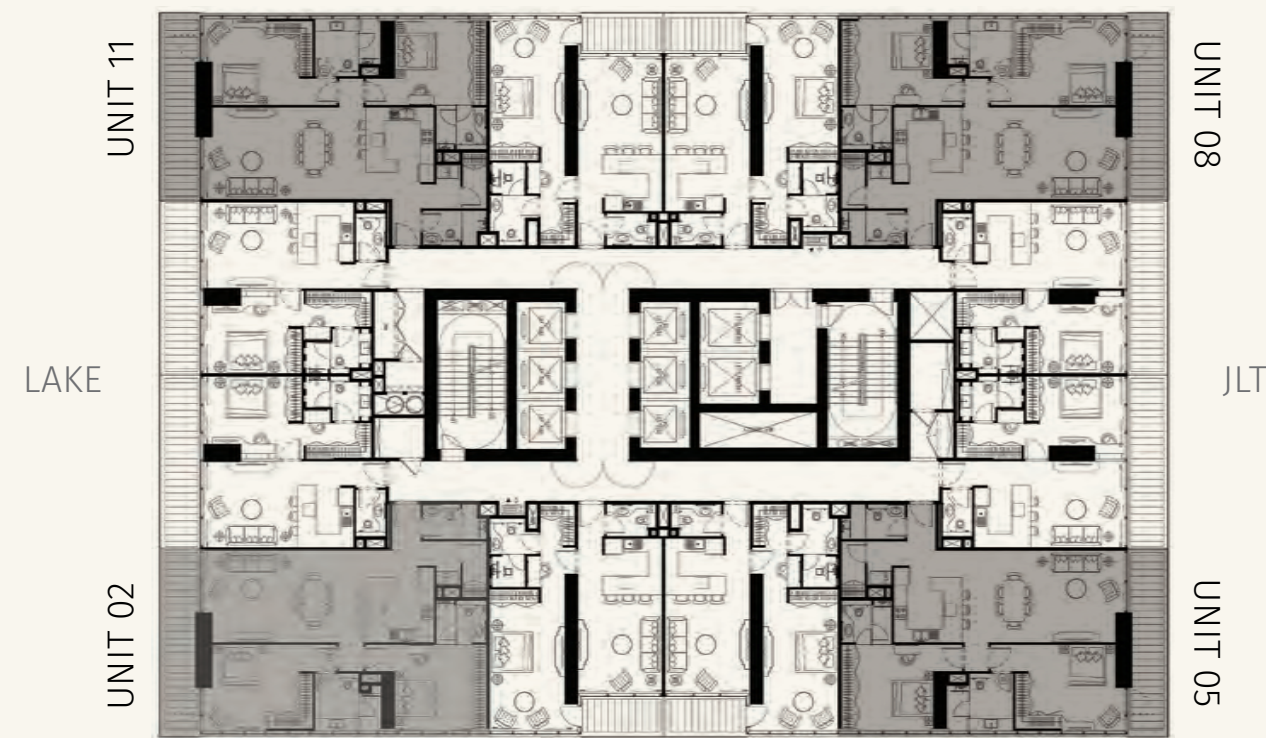
All room sizes and floorplan measurements are approximate and may vary per unit. Floorplans and unit features are preliminary and proposed only. Developer reserves the right to modify, revise, change or withdraw any or all of same in its sole and absolute discretion and without prior notice. Depictions of furnishings, finishes, appliances, counters, soffits, floor coverings and other matters of detail, including, without limitation, items of finish and decoration are conceptual only and are not necessarily included in each Unit. Consult your Agreement and the Prospectus for items included with your Unit.

2ND TO 17TH FLOOR

TWO BEDROOM

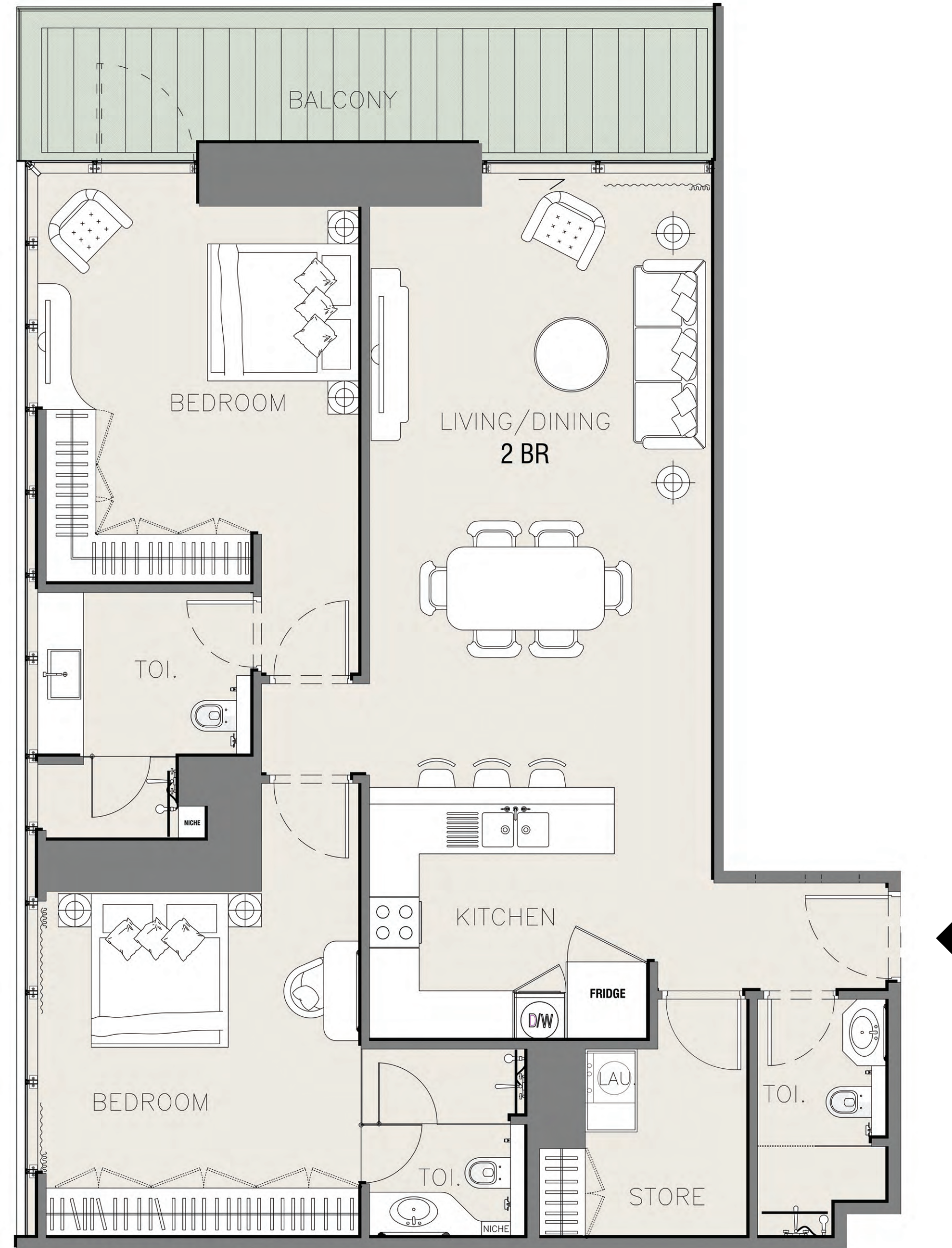


LAKE



JUMEIRAH ISLANDS

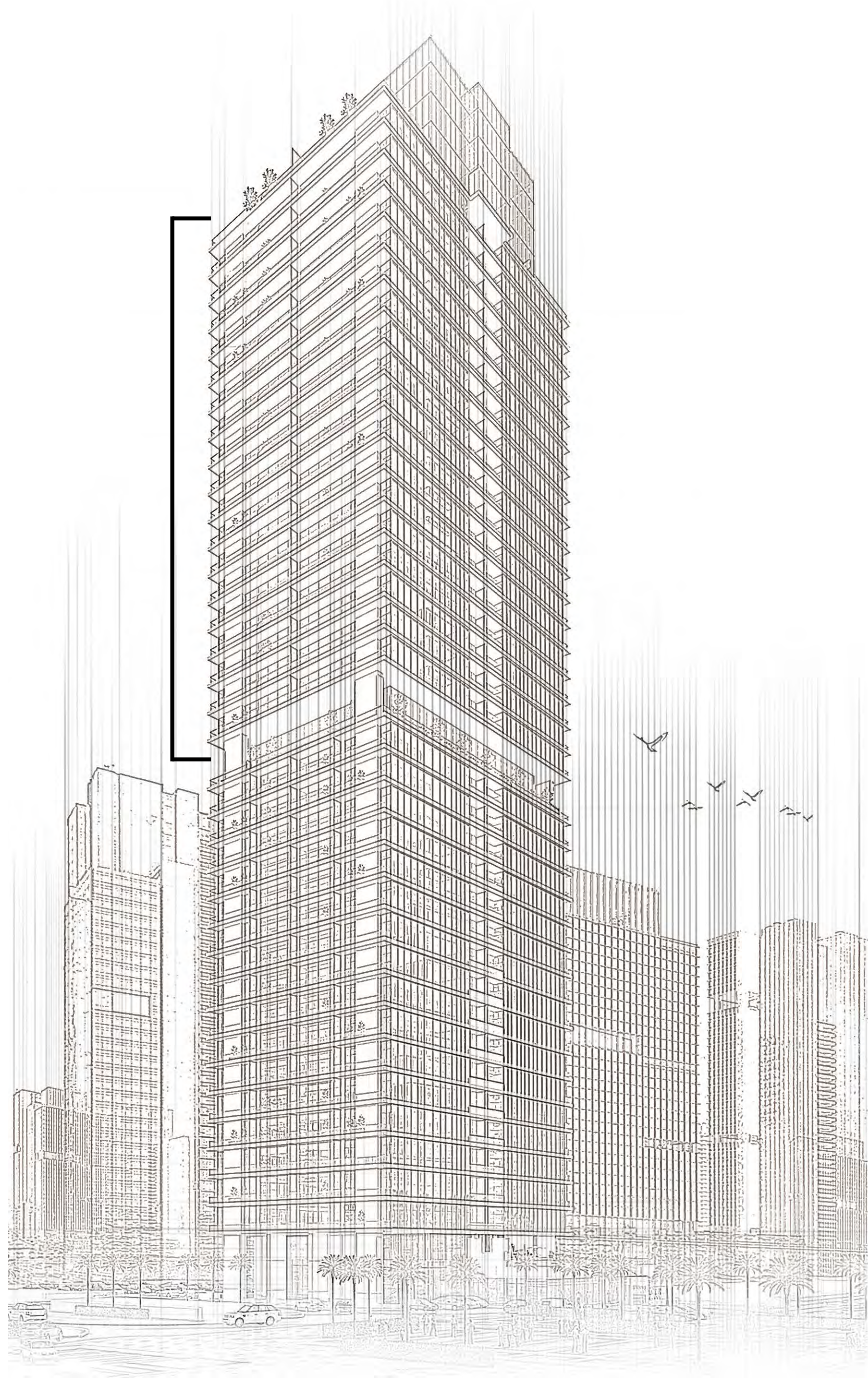
UNIT AREA	1,296.45 SQ.FT.
BALCONY AREA	163.94 SQ.FT.
NET UNIT AREA	1,460.40 SQ.FT.
TYPE	-
UNITS	2, 5, 8 AND 11



All room sizes and floorplan measurements are approximate and may vary per unit. Floorplans and unit features are preliminary and proposed only. Developer reserves the right to modify, revise, change or withdraw any or all of same in its sole and absolute discretion and without prior notice. Depictions of furnishings, finishes, appliances, counters, soffits, floor coverings and other matters of detail, including, without limitation, items of finish and decoration are conceptual only and are not necessarily included in each Unit. Consult your Agreement and the Prospectus for items included with your Unit.

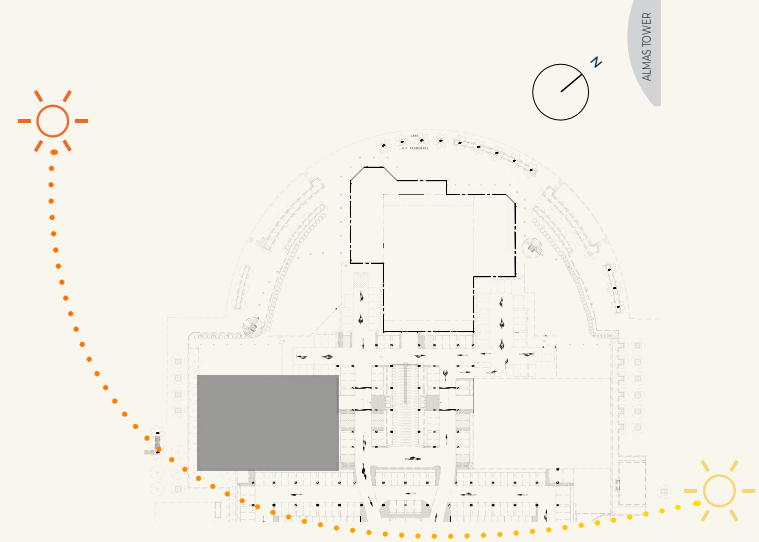
FLOOR PLANS

19th TO 35th FLOOR



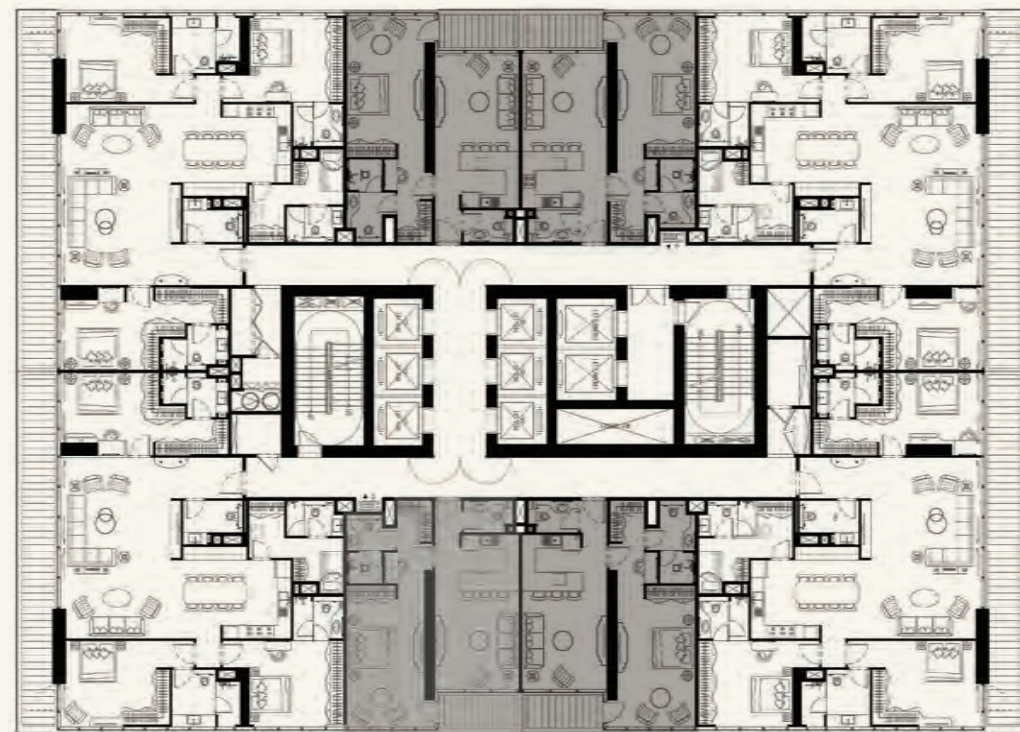
19TH TO 35TH FLOOR

ONE BEDROOM



LAKE

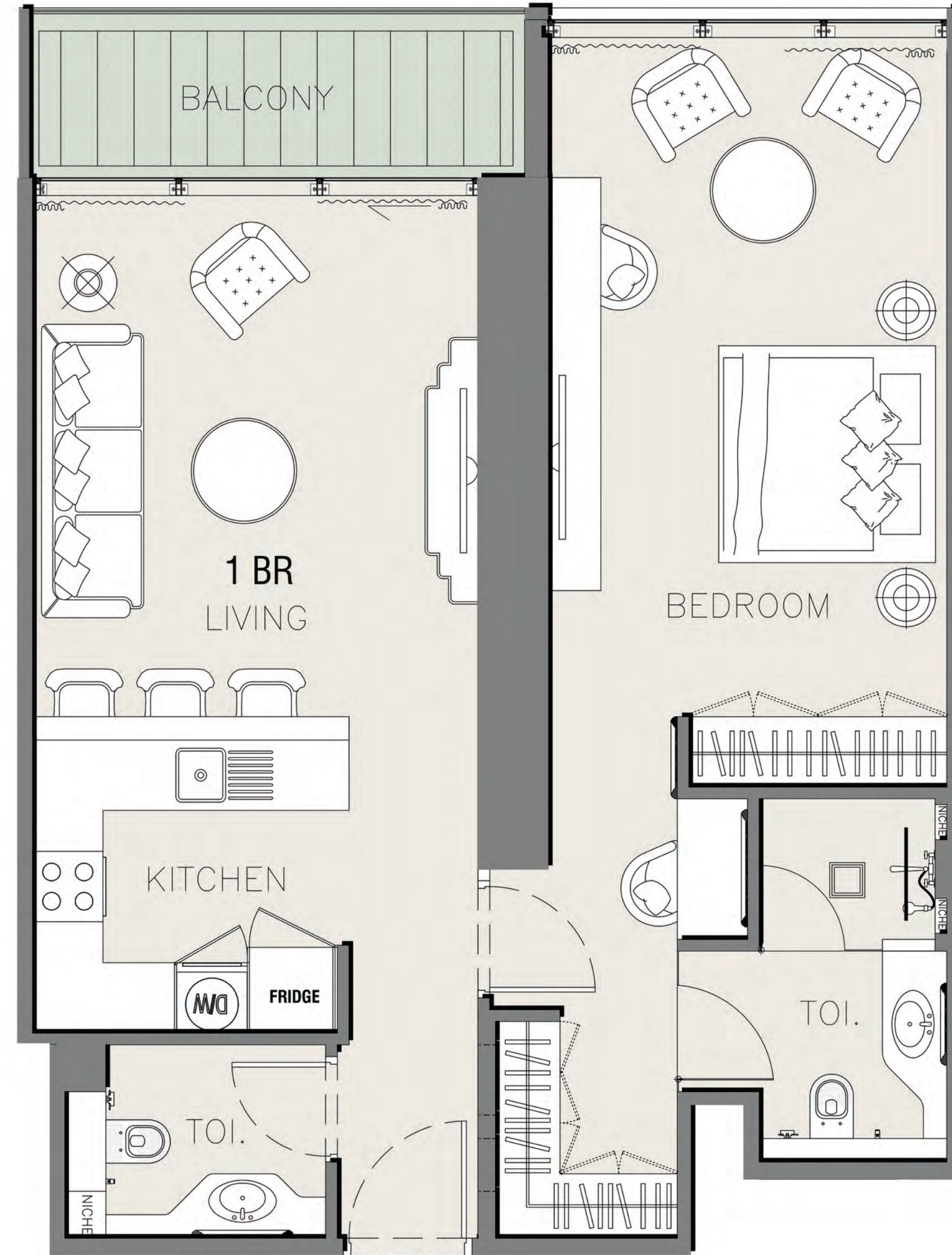
UNIT 07 UNIT 06



UNIT 02 UNIT 03

JUMEIRAH ISLANDS

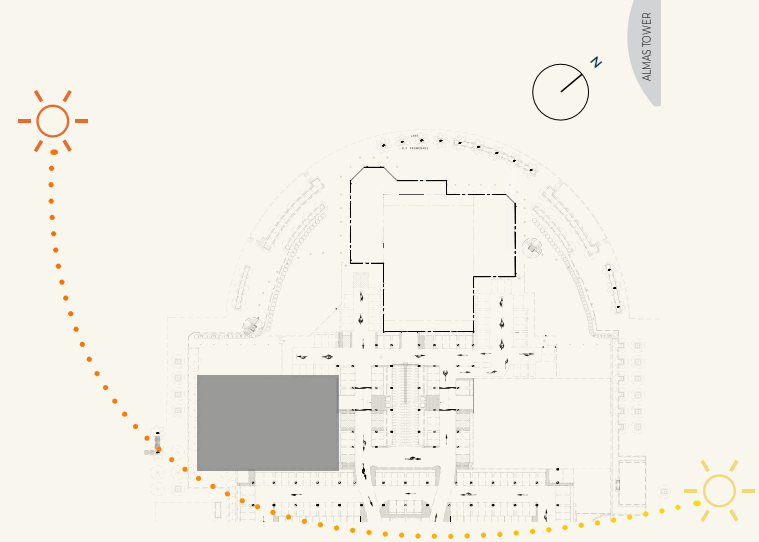
UNIT AREA	838.50 SQ.FT.
BALCONY AREA	72.03 SQ.FT.
NET UNIT AREA	910.53 SQ.FT.
TYPE	B
UNITS	2, 3, 6 AND 7



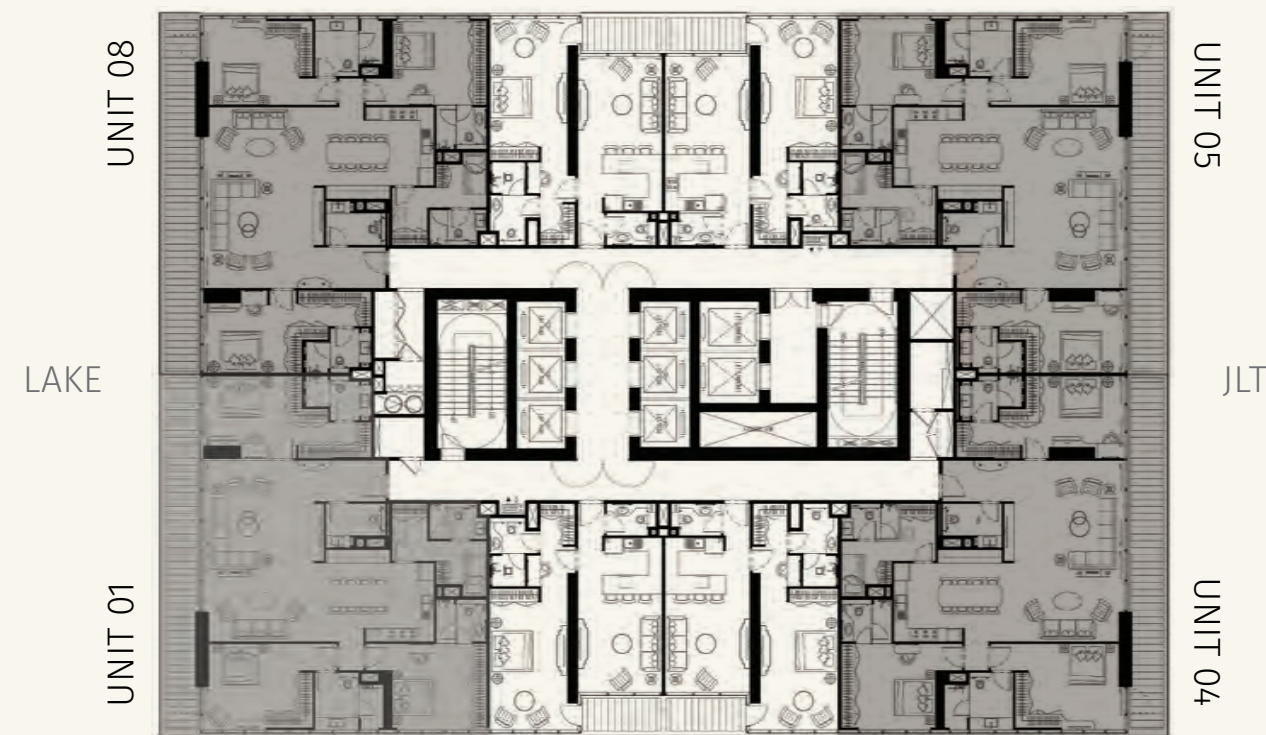
All room sizes and floorplan measurements are approximate and may vary per unit. Floorplans and unit features are preliminary and proposed only. Developer reserves the right to modify, revise, change or withdraw any or all of same in its sole and absolute discretion and without prior notice. Depictions of furnishings, finishes, appliances, counters, soffits, floor coverings and other matters of detail, including, without limitation, items of finish and decoration are conceptual only and are not necessarily included in each Unit. Consult your Agreement and the Prospectus for items included with your Unit.

19TH TO 35TH FLOOR

THREE BEDROOM

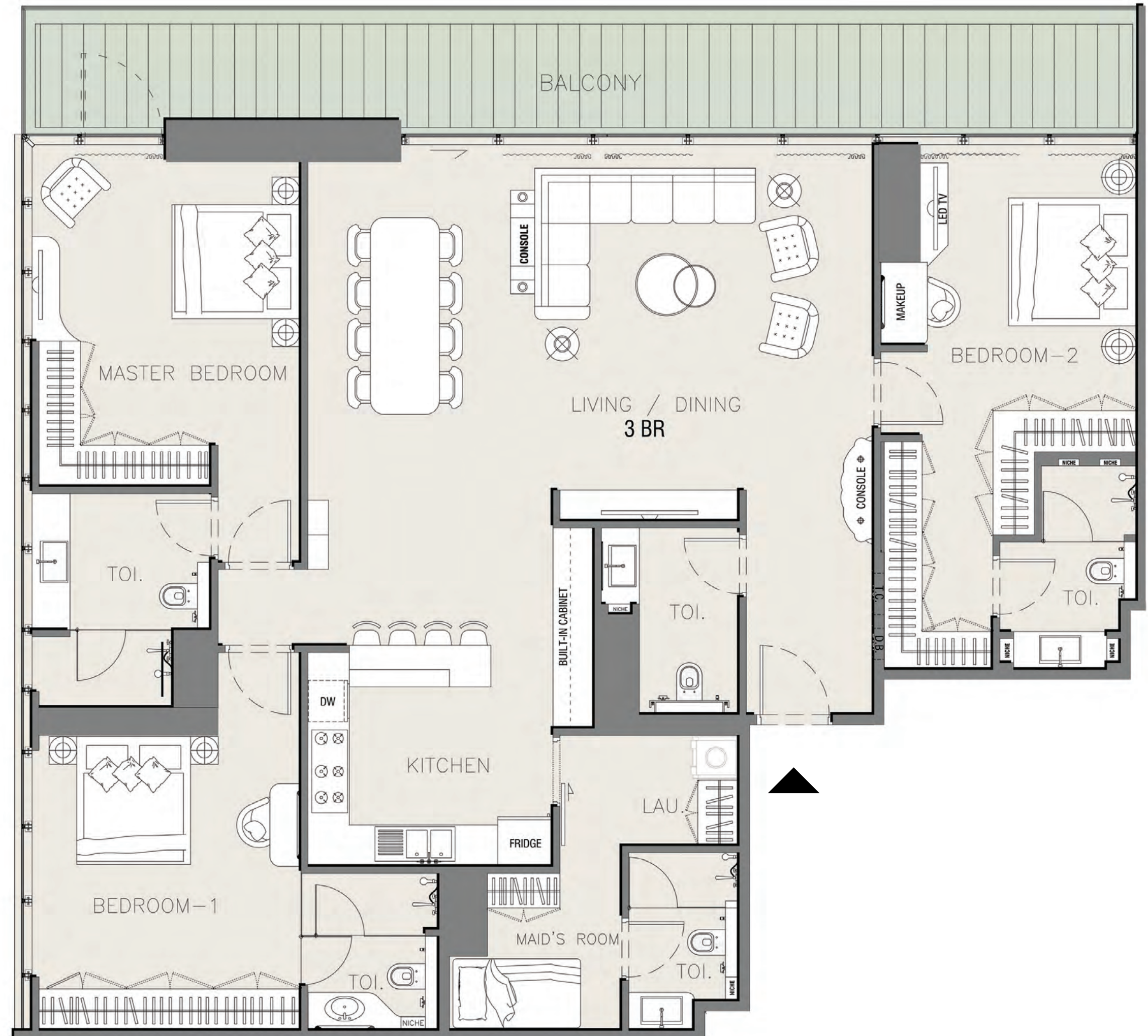


LAKE



JUMEIRAH ISLANDS

UNIT AREA	1,992.5 SQ.FT.
BALCONY AREA	316.05 SQ.FT.
NET UNIT AREA	2,308.5 SQ.FT.
TYPE	-
UNITS	1, 4, 5 AND 8



All room sizes and floorplan measurements are approximate and may vary per unit. Floorplans and unit features are preliminary and proposed only. Developer reserves the right to modify, revise, change or withdraw any or all of same in its sole and absolute discretion and without prior notice. Depictions of furnishings, finishes, appliances, counters, soffits, floor coverings and other matters of detail, including, without limitation, items of finish and decoration are conceptual only and are not necessarily included in each Unit. Consult your Agreement and the Prospectus for items included with your Unit.



All room sizes and floorplan measurements are approximate and may vary per unit. Floorplans and unit features are preliminary and proposed only. Developer reserves the right to modify, revise, change or withdraw any or all of same in its sole and absolute discretion and without prior notice. Depictions of furnishings, finishes, appliances, counters, soffits, floor coverings and other matters of detail, including, without limitation, items of finish and decoration are conceptual only and are not necessarily included in each Unit. Consult your Agreement and the Prospectus for items included with your Unit.

KITCHEN



LIVING ROOM

All room sizes and floorplan measurements are approximate and may vary per unit. Floorplans and unit features are preliminary and proposed only. Developer reserves the right to modify, revise, change or withdraw any or all of same in its sole and absolute discretion and without prior notice. Depictions of furnishings, finishes, appliances, counters, soffits, floor coverings and other matters of detail, including, without limitation, items of finish and decoration are conceptual only and are not necessarily included in each Unit. Consult your Agreement and the Prospectus for items included with your Unit.

All room sizes and floorplan measurements are approximate and may vary per unit. Floorplans and unit features are preliminary and proposed only. Developer reserves the right to modify, revise, change or withdraw any or all of same in its sole and absolute discretion and without prior notice. Depictions of furnishings, finishes, appliances, counters, soffits, floor coverings and other matters of detail, including, without limitation, items of finish and decoration are conceptual only and are not necessarily included in each Unit. Consult your Agreement and the Prospectus for items included with your Unit.

DINNING TABLE





All room sizes and floorplan measurements are approximate and may vary per unit. Floorplans and unit features are preliminary and proposed only. Developer reserves the right to modify, revise, change or withdraw any or all of same in its sole and absolute discretion and without prior notice. Depictions of furnishings, finishes, appliances, counters, soffits, floor coverings and other matters in detail, including, without limitation, items of finish and decoration are conceptual only and are not necessarily included in each Unit. Consult your Agreement and the Prospectus for items included with your Unit.

LIVING ROOM



BEDROOM ONE

All room sizes and floorplan measurements are approximate and may vary per unit. Floorplans and unit features are preliminary and proposed only. Developer reserves the right to modify, revise, change or withdraw any or all of same in its sole and absolute discretion and without prior notice. Depictions of furnishings, finishes, appliances, counters, soffits, floor coverings and other matters of detail, including, without limitation, items of finish and decoration are conceptual only and are not necessarily included in each Unit. Consult your Agreement and the Prospectus for items included with your Unit.



BEDROOM TWO

All room sizes and floorplan measurements are approximate and may vary per unit. Floorplans and unit features are preliminary and proposed only. Developer reserves the right to modify, revise, change or withdraw any or all of same in its sole and absolute discretion and without prior notice. Depictions of furnishings, finishes, appliances, counters, soffits, floor coverings and other matters of detail, including, without limitation, items of finish and decoration are conceptual only and are not necessarily included in each Unit. Consult your Agreement and the Prospectus for items included with your Unit.



BEDROOM THREE

These images are for illustrative purposes only and do not constitute an offer. All dimensions and limitations are preliminary and proposed only. Developer reserves the right to modify, revise, change or withdraw these images at any time without notice. All prices are approximate and subject to change without notice. All prices are approximate and subject to change without notice. All prices are approximate and subject to change without notice. All prices are approximate and subject to change without notice.



ROYAL

MBL Royal Developments DMCC is not owned or developed by MAG Property Development L.L.C or its affiliates. MAG Property Development L.L.C holds exclusivity with regards to sales and is not liable for the interior finishes and furnishing. The rendered drawings are an artistic interpretation of the design. They are not meant to be exact rendition. Some items may not be standard and/or represent an exact symbol. The final product may differ.